



# Cornerstone Methodist Church



London Road Horsham, St. Andrews Roffey & Partridge Green

*Seeking to follow Jesus in community, love and service*

## **Weekly News**

### **WELCOME**

Sunday, 27th October 2024

#### **COLLECT AND BIBLE READINGS FOR TODAY**

Eternal God, giver of love and peace, you call your children to live together as one family. Give us grace to learn your ways and to do your will, that we may bring justice and peace to all people, in the name of Jesus Christ. Amen

Job 42: 1-6, 10-17, Psalm 34: 1-8,  
Hebrews 7: 23-28, Mark 10: 46-52

10.30am

#### **Partridge Green Morning Worship**

with Deacon Sarah Pitkeathly

*Tea & Coffee after in the Hall*

10.30am

#### **St. Andrews Morning Worship**

with Rev Gavin Hancocks

*Tea & Coffee after in the Church*

10.30am

#### **London Road Morning Worship**

with Rev Sue Conroy

*Tea & Coffee after in the Meeting Place*

3.00pm



**Service of Remembrance at Cornerstone, London Road**  
followed by tea and cakes in the Hall

**Ministers**

## Diary for week commencing 27th October

### Monday 28th

10.00-am-1.00pm

**Garden Work Party at St. Andrews, Roffey.**

For information contact David Wrighton



2.00-4.00pm

**Movie Monday at CMC StAR**

### Tuesday 29th

9.00am



**Morning Prayers at CMC STAR- All welcome**

9.30am *followed by*  
*Hot drinks at 10.00am*

**Prayers at CMC LR in the Lounge. All welcome.** Should you have any prayers you wish to include please send to Sandra Artes on: [pray4@cornerstone-mc.org.uk](mailto:pray4@cornerstone-mc.org.uk)

10.00-11.00am

**Community Fridge at CMC LR**

11.30am-1.30pm

**Connecting Café at CMC StAR**

2.30 – 4.00pm

**Pastoral Visitors Meeting at CMC StAR** in the hall

2.30-4.00pm



**Open Door at CMC PG.** 'History of West Grinstead in the 20th Century' by Norman Berry

### Wednesday 30th

10.00-11.30am

**NO Toddler Group CMC LR – Half Term**

10.00-12noon

**The Café @ St. Andrews -** Cuppa & Chat, Cake and Fellowship

7.30-9.00pm

**'Your Place at the table' –** via Zoom. Details in notices

### Thursday 31st

9.30-11.30am

**NO Bright Stars Toddlers at StAR – Half Term**

**NO Bereavement Journey Meeting at CMC STAR**  
**this week – Half Term**

10.00am-1.00pm

**Messy Church at CMC PG.** Theme 'What is God like?'  
Lunch & drinks provided

1.00-2.00pm

**Community Fridge at CMC LR**



### Friday 1st

10.30am

**NO Easy Movers.**

2.30-5.30pm

**Friday Café at CMC LR.**

## Saturday 2nd

8.00am

**Prayer Breakfast at CMC PG, in the Hall**

9.30am

**Prayer Partners in the Garden Room, CMC STAR**

10.00-11.00am

**Community Fridge  
at CMC, StAR**



**Bring your own bag**

## *Praying for the people of God*

*Pray diligently. Stay alert, with your eyes wide  
open in gratitude (Col 4:2 Msg)*



Josephine Howard & Peter Levi, Janet Jackson, Jenny Jackson

## **Sunday, 3<sup>rd</sup> November**

9.30am

**'Your Place at the Table' - StAR**

10.30am

**St. Andrews Morning Worship**

with Deacon Sarah Pitkeathly

*Tea & Coffee after in the Church*

10.30am

**Partridge Green Morning Worship**

with Bob Boyce

*Tea & Coffee after in the Hall*

10.30am

**London Road Morning Worship with Communion**

with Rev Gavin Hancocks

*Tea & Coffee after in The Meeting Place*

***Collection for Charity - Cornerstone MC Mission***

12.30pm

**Sunday Lunch in Wesley Hall**

### Service of Remembrance

Sunday 27th October  
Cornerstone Methodist Church  
at London Road, 3pm  
To remember all those we  
have lost  
Followed by tea and  
cakes in the hall

Cornerstone Methodist Church is a Registered Charity: 1134052



### **Your Place at the Table**

Your opportunity to share your  
thoughts about the future strategy of  
Cornerstone

Wednesday 16th October  
2.30 - 4pm at London Road

Wednesday 30th October  
7.30 - 9pm via Zoom

Sunday 3rd November  
9.30am at St Andrews  
The link for the session held via Zoom  
will be sent in the weekly email



Cornerstone Methodist Church is a Registered Charity: 1134052

## SUNDAY LUNCH AT LONDON ROAD

We invite any members of our 3 church families who live alone to join us for lunch

**on 3<sup>rd</sup> November**

in the Wesley Hall at 12.30pm. Cost £6.

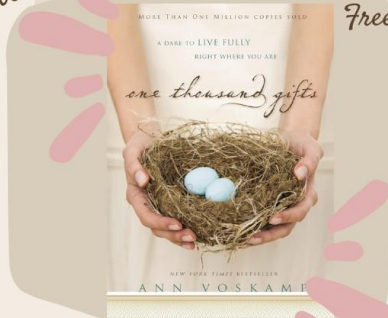
If you would like to book a place please contact  
Liz Sear (268075) **by TODAY, 27<sup>th</sup> October**



*Exploring  
Gratitude*

*Monday evenings for 6 weeks from  
4th November, 7.30-9pm, Cornerstone  
Methodist Church at St Andrews,*

*Free*



*Book your place with Deacon Sarah  
[deacon@dhcircuit.org](mailto:deacon@dhcircuit.org)*

*Cornerstone Methodist Church is a Registered Charity: 1134052*

## **Care Mission Team Birthday Tea Party**

A combined Birthday Tea for  
September, October, November Birthdays

**Wednesday 6<sup>th</sup> November 3.00pm**

At Cornerstone, London Road

*Invitations will be sent out shortly*





**Cornerstone Methodist Church** 

Seeking to follow Jesus in community, love and service

*POWELL & COY LTD, 100, 101, 102, 103, 104, 105, 106, 107, 108, 109, 110, 111, 112, 113, 114, 115, 116, 117, 118, 119, 120, 121, 122, 123, 124, 125, 126, 127, 128, 129, 130, 131, 132, 133, 134, 135, 136, 137, 138, 139, 140, 141, 142, 143, 144, 145, 146, 147, 148, 149, 150, 151, 152, 153, 154, 155, 156, 157, 158, 159, 160, 161, 162, 163, 164, 165, 166, 167, 168, 169, 170, 171, 172, 173, 174, 175, 176, 177, 178, 179, 180, 181, 182, 183, 184, 185, 186, 187, 188, 189, 190, 191, 192, 193, 194, 195, 196, 197, 198, 199, 200, 201, 202, 203, 204, 205, 206, 207, 208, 209, 210, 211, 212, 213, 214, 215, 216, 217, 218, 219, 220, 221, 222, 223, 224, 225, 226, 227, 228, 229, 230, 231, 232, 233, 234, 235, 236, 237, 238, 239, 240, 241, 242, 243, 244, 245, 246, 247, 248, 249, 250, 251, 252, 253, 254, 255, 256, 257, 258, 259, 260, 261, 262, 263, 264, 265, 266, 267, 268, 269, 270, 271, 272, 273, 274, 275, 276, 277, 278, 279, 280, 281, 282, 283, 284, 285, 286, 287, 288, 289, 290, 291, 292, 293, 294, 295, 296, 297, 298, 299, 300, 301, 302, 303, 304, 305, 306, 307, 308, 309, 310, 311, 312, 313, 314, 315, 316, 317, 318, 319, 320, 321, 322, 323, 324, 325, 326, 327, 328, 329, 330, 331, 332, 333, 334, 335, 336, 337, 338, 339, 340, 341, 342, 343, 344, 345, 346, 347, 348, 349, 350, 351, 352, 353, 354, 355, 356, 357, 358, 359, 360, 361, 362, 363, 364, 365, 366, 367, 368, 369, 370, 371, 372, 373, 374, 375, 376, 377, 378, 379, 380, 381, 382, 383, 384, 385, 386, 387, 388, 389, 390, 391, 392, 393, 394, 395, 396, 397, 398, 399, 400, 401, 402, 403, 404, 405, 406, 407, 408, 409, 410, 411, 412, 413, 414, 415, 416, 417, 418, 419, 420, 421, 422, 423, 424, 425, 426, 427, 428, 429, 430, 431, 432, 433, 434, 435, 436, 437, 438, 439, 440, 441, 442, 443, 444, 445, 446, 447, 448, 449, 450, 451, 452, 453, 454, 455, 456, 457, 458, 459, 460, 461, 462, 463, 464, 465, 466, 467, 468, 469, 470, 471, 472, 473, 474, 475, 476, 477, 478, 479, 480, 481, 482, 483, 484, 485, 486, 487, 488, 489, 490, 491, 492, 493, 494, 495, 496, 497, 498, 499, 500, 501, 502, 503, 504, 505, 506, 507, 508, 509, 510, 511, 512, 513, 514, 515, 516, 517, 518, 519, 520, 521, 522, 523, 524, 525, 526, 527, 528, 529, 530, 531, 532, 533, 534, 535, 536, 537, 538, 539, 540, 541, 542, 543, 544, 545, 546, 547, 548, 549, 550, 551, 552, 553, 554, 555, 556, 557, 558, 559, 560, 561, 562, 563, 564, 565, 566, 567, 568, 569, 570, 571, 572, 573, 574, 575, 576, 577, 578, 579, 580, 581, 582, 583, 584, 585, 586, 587, 588, 589, 590, 591, 592, 593, 594, 595, 596, 597, 598, 599, 600, 601, 602, 603, 604, 605, 606, 607, 608, 609, 610, 611, 612, 613, 614, 615, 616, 617, 618, 619, 620, 621, 622, 623, 624, 625, 626, 627, 628, 629, 630, 631, 632, 633, 634, 635, 636, 637, 638, 639, 640, 641, 642, 643, 644, 645, 646, 647, 648, 649, 650, 651, 652, 653, 654, 655, 656, 657, 658, 659, 660, 661, 662, 663, 664, 665, 666, 667, 668, 669, 670, 671, 672, 673, 674, 675, 676, 677, 678, 679, 680, 681, 682, 683, 684, 685, 686, 687, 688, 689, 690, 691, 692, 693, 694, 695, 696, 697, 698, 699, 700, 701, 702, 703, 704, 705, 706, 707, 708, 709, 710, 711, 712, 713, 714, 715, 716, 717, 718, 719, 720, 721, 722, 723, 724, 725, 726, 727, 728, 729, 730, 731, 732, 733, 734, 735, 736, 737, 738, 739, 740, 741, 742, 743, 744, 745, 746, 747, 748, 749, 750, 751, 752, 753, 754, 755, 756, 757, 758, 759, 760, 761, 762, 763, 764, 765, 766, 767, 768, 769, 770, 771, 772, 773, 774, 775, 776, 777, 778, 779, 780, 781, 782, 783, 784, 785, 786, 787, 788, 789, 790, 791, 792, 793, 794, 795, 796, 797, 798, 799, 800, 801, 802, 803, 804, 805, 806, 807, 808, 809, 810, 811, 812, 813, 814, 815, 816, 817, 818, 819, 820, 821, 822, 823, 824, 825, 826, 827, 828, 829, 830, 831, 832, 833, 834, 835, 836, 837, 838, 839, 840, 841, 842, 843, 844, 845, 846, 847, 848, 849, 850, 851, 852, 853, 854, 855, 856, 857, 858, 859, 860, 861, 862, 863, 864, 865, 866, 867, 868, 869, 870, 871, 872, 873, 874, 875, 876, 877, 878, 879, 880, 881, 882, 883, 884, 885, 886, 887, 888, 889, 890, 891, 892, 893, 894, 895, 896, 897, 898, 899, 900, 901, 902, 903, 904, 905, 906, 907, 908, 909, 910, 911, 912, 913, 914, 915, 916, 917, 918, 919, 920, 921, 922, 923, 924, 925, 926, 927, 928, 929, 930, 931, 932, 933, 934, 935, 936, 937, 938, 939, 940, 941, 942, 943, 944, 945, 946, 947, 948, 949, 950, 951, 952, 953, 954, 955, 956, 957, 958, 959, 960, 961, 962, 963, 964, 965, 966, 967, 968, 969, 970, 971, 972, 973, 974, 975, 976, 977, 978, 979, 980, 981, 982, 983, 984, 985, 986, 987, 988, 989, 990, 991, 992, 993, 994, 995, 996, 997, 998, 999, 1000*

**QUIET DAY**

Join us for a Quiet Day at  
CMC Partridge Green on:  
Saturday 9<sup>th</sup> November

*Time:* 10am - 3pm

*Theme:* Change My  
Heart O God

*Lunch:* Bring Your Own

*The Day will be led by Gavin. If you  
have any transport needs, please call  
him on 07880 528170*



## Requests for your help from the Learning & Worship Forum

### Advent Lunchtime Conversations

Volunteers are needed to help us run the Advent Lunchtime  
Conversations at St Andrews which will be starting on  
Wednesday 27<sup>th</sup> November for four weeks.

Volunteers are needed from 11am to set up the hall; clearing  
up should be finished by 1pm.

If this is something you could help with, whether for just one  
week or more, please speak to Christine Lawley or email  
[landw-forum@cornerstone-mc.org.uk](mailto:landw-forum@cornerstone-mc.org.uk)

*From:*

*Amalia Lovett,  
Deputy Charity Manager,  
Horsham Matters*

I wanted to say a BIG thank you for your very kind  
donation of £1,717.71.

Your kind donation will help us support those experiencing  
hardship in our community.

I am attaching a certificate of appreciation.

Thank you once again for your support.

Gratefully yours,

*Amalia*



THANK YOU

Cornerstone Methodist Church

FOR YOUR DONATION OF  
£1,717.71

AND YOUR SUPPORT OF THOSE EXPERIENCING  
HARDSHIP IN OUR COMMUNITY



# Making worship more inclusive

## Large print resources

We would like to provide large print worship resources more regularly for those who use them and need someone to help with coordinating this. If you are interested in being, involved, please speak to Christine Lawley or email

[landw-forum@cornerstone-mc.org.uk](mailto:landw-forum@cornerstone-mc.org.uk)



### Notices:

Please send Information & Notices for  
**ALL CHURCHES** to Marjorie Hayman:

**e-mail:** [notices@cornerstone-mc.org.uk](mailto:notices@cornerstone-mc.org.uk)

**NO LATER THAN** 12 noon, Wednesday before  
the Sunday notice(s) required

## UNIFORMED YOUTH ACTIVITIES FOR LONDON ROAD

Monday	Beavers	5.00pm-6.15pm
Tuesday	Rainbows	5.00pm-6.00pm
	Brownies	5.00pm-6.30pm
	Guides	7.00pm-8.45pm
Wednesday	Rainbows	5.00pm-6.00pm
	Brownies	5.00pm-6.30pm
Thursday	Scouts	7.00pm-9.00pm
Friday	Cubs	6.30pm-8.00pm

For further details please see our Website [www.lrmchorsham.org](http://www.lrmchorsham.org)

### **Contact Addresses**

#### **CMC - London Road**

**Address:** London Road, Horsham, RH12 1AN

**Church Office:** [office@cornerstone-mc.org.uk](mailto:office@cornerstone-mc.org.uk) Tel: 01403 240714

**Bookings:** [bookings@cornerstone-mc.org.uk](mailto:bookings@cornerstone-mc.org.uk)

Tel: 01403 240714

#### **CMC - St. Andrews**

**Address** Crawley Road, Roffey, Horsham, RH12 4DX

**Church Office** [admin@cornerstone-mc.org.uk](mailto:admin@cornerstone-mc.org.uk)

Tel: 01403 275456

#### **CMC - Partridge Green**

**Address** High Street, Partridge Green, Horsham, RH13 8HP

#### **Web Site for Cornerstone Methodist Church:**

[www.cornerstone-mc.org.uk](http://www.cornerstone-mc.org.uk)

#### **A Praying Community:**

*If you e-mail your prayer request to:- [pray4@cornerstone-mc.org.uk](mailto:pray4@cornerstone-mc.org.uk)  
it will find its way onto our regular prayer lists.*

#### **Find us on Facebook**

Cornerstone Methodist Church at St Andrews

Cornerstone Methodist Church at Partridge Green

Cornerstone Methodist Church at London Rd Horsham